

# PRODUCT DATASHEET

## HCI-TT 100 W/830 SUPER 4Y

POWERBALL HCI-TT SUPER 4Y | Metal halide lamps with ceramic technology for enclosed luminaires



---

### AREAS OF APPLICATION

- Streets
- Outdoor lighting
- Industrial installations
- Exhibition halls and trade fairs
- Approved only for use in enclosed luminaires
- Outdoor applications only in suitable luminaires

---

### PRODUCT BENEFITS

- Up to 15 % higher lumen maintenance factor compared to HCI-TT standard lamps
- Up to 30 % higher lum. efficacy for lamps  $\leq 100$  W (comp. to NAV-T Super 4Y/6Y)
- Good color rendering
- Operation in existing HPS installations as ignition voltage of IEC 60662 is met
- Energy savings of up to 70 % when replacing mercury vapor lamps (HQL)
- Optimum energy efficiency on POWERTRONIC PTo 3DIM ECGs
- UV values significantly below the maximum permitted thresholds to IEC 61167 thanks to UV filter

---

### PRODUCT FEATURES

- White light due to POWERBALL ceramic technology
- Light color: warm white (830 WDL)
- Extended service lifetime: 4 years (at approx. 11 h/day)
- Very high luminous efficacy: up to 125 lm/W
- Lamp survival factor: 95 % after 16,000 h burning time



- Average lifetime: up to 24,000 h
- ErP compliant according to EU Regulation 245/2009
- Dimmable on conventional control gears and electronic control gears

## TECHNICAL DATA

### Electrical data

<b>Nominal wattage</b>	100.00 W
<b>Rated wattage</b>	100.00 W
<b>Lamp current</b>	1.2 A
<b>PFC capacitor at 50 Hz</b>	12 $\mu$ F <sup>1)</sup>
<b>Nominal voltage</b>	100 V
<b>Ignition voltage</b>	3.3 / 5.0 kVp <sup>2)</sup>

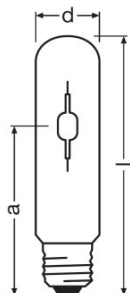
<sup>1)</sup> At rated voltage and  $\cos \varphi \geq 0.9$

<sup>2)</sup> Minimum / Maximum

### Photometrical data

<b>Rated lamp efficacy (standard condition)</b>	120 lm/W
<b>Rated luminous flux</b>	12000 lm
<b>Color rendering index Ra</b>	$\geq 80$
<b>Color temperature</b>	3000 K
<b>Light color</b>	830
<b>Rated LLMF at 2,000 h</b>	0.94
<b>Rated LLMF at 4,000 h</b>	0.92
<b>Rated LLMF at 6,000 h</b>	0.90
<b>Rated LLMF at 8,000 h</b>	0.89
<b>Rated LLMF at 12,000 h</b>	0.85
<b>Rated LLMF at 16,000 h</b>	0.84
<b>Rated LLMF at 20,000 h</b>	0.75
<b>UV protection</b>	Yes

Dimensions & weight



<b>Diameter</b>	47.0 mm
<b>Length</b>	210.0 mm
<b>Light center length (LCL)</b>	132.0 mm
<b>Product weight</b>	135.00 g

Temperatures & operating conditions

<b>Maximum permitted outer bulb temperature</b>	450 °C
<b>Maximum permitted base edge temperature</b>	210 °C

Lifespan

<b>Rated lamp survival factor at 2,000 h</b>	0.99
<b>Rated lamp survival factor at 4,000 h</b>	0.99
<b>Rated lamp survival factor at 6,000 h</b>	0.98
<b>Rated lamp survival factor at 8,000 h</b>	0.97
<b>Rated lamp survival factor at 12,000 h</b>	0.97
<b>Rated lamp survival factor at 16,000 h</b>	0.95
<b>Rated lamp survival factor at 20,000 h</b>	0.78
<b>Lifespan B50</b>	24000 h
<b>Lifespan B10</b>	18000 h
<b>Lifespan B5</b>	16000 h
<b>Operation mode LLMF/LSF</b>	50 Hz

Additional product data

<b>Base (standard designation)</b>	E40
<b>Design / version</b>	Clear
<b>System guarantee level</b>	3 (2/5)
<b>Mercury content</b>	13.2 mg

### Capabilities

<b>Dimmable</b>	Yes <sup>1)</sup>
<b>Burning position</b>	Any
<b>Enclosed luminaire required</b>	Yes

<sup>1)</sup> In combination with POWERTRONIC PTo

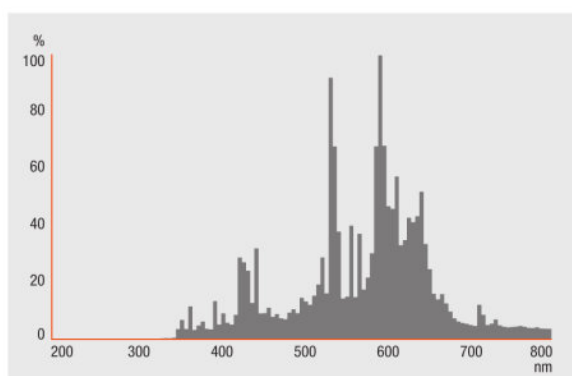
### Certificates & standards

<b>Energy efficiency class</b>	A+
<b>Energy consumption</b>	110 kWh/1000h

### Country-specific categorizations

<b>ILCOS</b>	MT/UB-100/830-H/E/SL-E40-47/210
--------------	---------------------------------

### Light Distribution



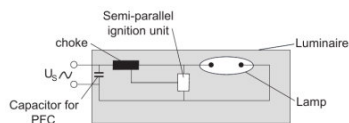
### Spectral power distribution

### SYSTEM GUARANTEE

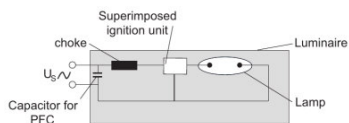
When operated with OSRAM POWERTRONIC control gear, an extended system guarantee is granted for these lamps

### SAFETY ADVICE

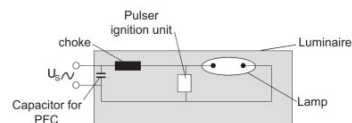
Where possible, use a timer igniter (switch-off time of at least 15 minutes). Otherwise, switch off the luminaire for at least 15 minutes if a brief interruption has occurred to the mains voltage supply.



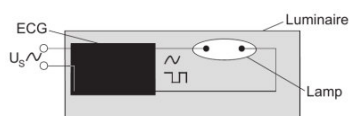
Circuit diagram



Circuit diagram



Circuit diagram



Circuit diagram

**LOGISTICAL DATA**

Product code	Product description	Packaging unit (Pieces/Unit)	Dimensions (length x width x height)	Volume	Gross weight
4052899108097	HCI-TT 100 W/830 SUPER 4Y	Shipping carton box 12	266 mm x 216 mm x 277 mm	15.92 dm <sup>3</sup>	2022.00 g

The mentioned product code describes the smallest quantity unit which can be ordered. One shipping unit can contain one or more single products. When placing an order, for the quantity please enter single or multiples of a shipping unit.

**REFERENCES / LINKS**

For more information on the system guarantee and the terms and conditions of the guarantee visit

▶ [www.ledvance.com/system-guarantee](http://www.ledvance.com/system-guarantee)

**DISCLAIMER**

Subject to change without notice. Errors and omission excepted. Always make sure to use the most recent release.