

# PRODUCT DATASHEET

## HCI-TS 150 W/942 NDL PB

POWERBALL HCI-TS | Metal halide lamps with ceramic technology for enclosed luminaires



---

### AREAS OF APPLICATION

- Shopping arcades
- Foyers, reception areas
- Museums, exhibitions
- Exhibition halls and trade fairs
- Factories and workshops
- Buildings, monuments, bridges
- Approved only for use in enclosed luminaires
- Outdoor applications only in suitable luminaires

---

### PRODUCT BENEFITS

- Very high efficiency
- Good to excellent color rendering
- Very good color stability
- UV values significantly below the maximum permitted thresholds to IEC 61167 thanks to UV filter

---

### PRODUCT FEATURES

- POWERBALL ceramic technology
- Light colors: warm white (830 WDL), neutral white (942 NDL)
- Average lifetime: 15,000 h (operation with ECG with 70...400 Hz square-wave current)
- Average lifetime: 12,000 h (with magnetic control gear)



**TECHNICAL DATA**

Electrical data

<b>Nominal wattage</b>	150.00 W
<b>Rated wattage</b>	147.00 W
<b>Lamp current</b>	1.8 A
<b>PFC capacitor at 50 Hz</b>	20 µF <sup>1)</sup>
<b>Ignition voltage</b>	3.6 / 5.0 kVp <sup>2)</sup>

<sup>1)</sup> At rated voltage and  $\cos \varphi \geq 0.9$

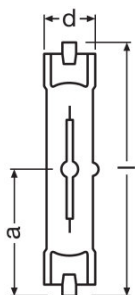
<sup>2)</sup> Minimum; for superimposed ignition with square wave electronic ballast 3.0 kVp are sufficient / Maximum; this limit is for safety reasons

Photometrical data

<b>Luminous flux</b>	14800 lm
<b>Luminous efficacy</b>	101 lm/W <sup>1)</sup>
<b>Color rendering index Ra</b>	96
<b>Color temperature</b>	4200 K
<b>Light color</b>	940
<b>Rated LLMF at 2,000 h</b>	0.85
<b>Rated LLMF at 4,000 h</b>	0.75
<b>Rated LLMF at 6,000 h</b>	0.70
<b>Rated LLMF at 8,000 h</b>	0.67
<b>Rated LLMF at 12,000 h</b>	0.65
<b>UV protection</b>	Yes

— <sup>1)</sup> In operation with low frequency square wave electronic ballast, 70...400 Hz. Operation with electromagnetic ballast may be less efficient.

Dimensions & weight



<b>Diameter</b>	23.0 mm
<b>Length</b>	138.0 mm
<b>Light center length (LCL)</b>	69.0 mm
<b>Product weight</b>	27.00 g

## Temperatures &amp; operating conditions

Maximum permitted outer bulb temperature	650 °C
Maximum permitted pinch temperature	330 °C

## Lifespan

Rated lamp survival factor at 2,000 h	0.99
Rated lamp survival factor at 4,000 h	0.98
Rated lamp survival factor at 6,000 h	0.97
Rated lamp survival factor at 8,000 h	0.96
Rated lamp survival factor at 12,000 h	0.80
Lifespan B50	15000 h <sup>1)</sup>
Operation mode LLMF/LSF	ECG

<sup>1)</sup> At ECG

## Additional product data

Base (standard designation)	RX7s-24
System guarantee level	3 (2/5)
Mercury content	18.2 mg <sup>1)</sup>

<sup>1)</sup> Maximum

## Capabilities

Dimmable	Yes <sup>1)</sup>
Burning position	p45
Enclosed luminaire required	Yes

<sup>1)</sup> In combination with POWERTRONIC PTo

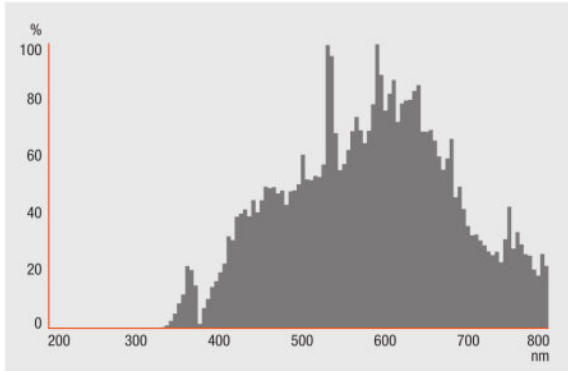
## Certificates &amp; standards

Energy efficiency class	A+
Energy consumption	162 kWh/1000h

## Country-specific categorizations

ILCOS	MD/UB-150/942-H/SL-RX7s=24-25/132/H
-------	-------------------------------------

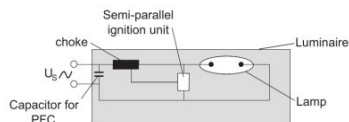
Light Distribution



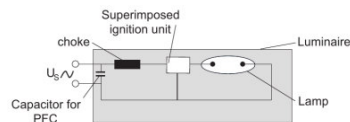
Spectral power distribution

**SYSTEM GUARANTEE**

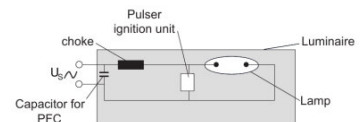
When operated with OSRAM POWERTRONIC control gear, an extended system guarantee is granted for these lamps



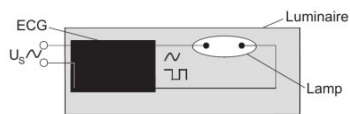
Circuit diagram



Circuit diagram



Circuit diagram



Circuit diagram

**LOGISTICAL DATA**

Product code	Product description	Packaging unit (Pieces/Unit)	Dimensions (length x width x height)	Volume	Gross weight
4008321679871	HCI-TS 150 W/942 NDL PB	Shipping carton box 12	180 mm x 178 mm x 142 mm	4.55 dm <sup>3</sup>	603.00 g

The mentioned product code describes the smallest quantity unit which can be ordered. One shipping unit can contain one or more single products. When placing an order, for the quantity please enter single or multiples of a shipping unit.

**REFERENCES / LINKS**

For more information on the system guarantee and the terms and conditions of the guarantee visit [www.ledvance.com/system-guarantee](http://www.ledvance.com/system-guarantee)

**DISCLAIMER**

Subject to change without notice. Errors and omission excepted. Always make sure to use the most recent release.