

PRODUCT DATASHEET

HQI-TS 70 W/WDL

POWERSTAR HQI-TS EXCELLENCE | Metal halide lamps with quartz technology for enclosed luminaires



AREAS OF APPLICATION

- Shop interiors, shop windows
- Shopping arcades
- Foyers, reception areas
- Buildings, monuments, bridges
- Museums, exhibitions
- Exhibition halls and trade fairs
- Pedestrian zones, public squares
- Parks and gardens
- Approved only for use in enclosed luminaires
- Outdoor applications only in suitable luminaires

PRODUCT BENEFITS

- High efficiency
- Uniform distribution of light
- Good to excellent color rendering
- Long lifetime
- Hot restrike capable
- UV values significantly below the maximum permitted thresholds to IEC 61167 thanks to UV filter

PRODUCT FEATURES

- POWERSTAR quartz technology
- Light colors: warm white (WDL), neutral white (NDL), daylight (D), cool daylight (CD)
- Average lifetime: 12,000 h



TECHNICAL DATA

Electrical data

| | |
|-------------------------------|----------------------------|
| Nominal wattage | 70.00 W |
| Rated wattage | 78.00 W |
| Lamp current | 0.95 A |
| PFC capacitor at 50 Hz | 12 µF ¹⁾ |
| Nominal voltage | 98 V |
| Ignition voltage | 3.6 / 36 kVp ²⁾ |

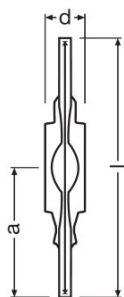
¹⁾ At rated voltage and $\cos \varphi \geq 0.9$

²⁾ Minimum / Maximum

Photometrical data

| | |
|---|---------|
| Rated lamp efficacy (standard condition) | 76 lm/W |
| Rated luminous flux | 5925 lm |
| Color rendering index Ra | 67 |
| Color temperature | 3300 K |
| Light color | 633 |
| Rated LLMF at 2,000 h | 0.68 |
| Rated LLMF at 4,000 h | 0.64 |
| Rated LLMF at 6,000 h | 0.56 |
| Rated LLMF at 8,000 h | 0.50 |
| Rated LLMF at 12,000 h | 0.45 |
| UV protection | Yes |

Dimensions & weight



| | |
|----------------------------------|----------|
| Diameter | 19.0 mm |
| Length | 117.0 mm |
| Light center length (LCL) | 57.0 mm |
| Product weight | 15.00 g |

Temperatures & operating conditions

| | |
|--|--------|
| Maximum permitted outer bulb temperature | 500 °C |
| Maximum permitted pinch temperature | 350 °C |

Lifespan

| | |
|--|---------|
| Rated lamp survival factor at 2,000 h | 0.95 |
| Rated lamp survival factor at 4,000 h | 0.90 |
| Rated lamp survival factor at 6,000 h | 0.85 |
| Rated lamp survival factor at 8,000 h | 0.80 |
| Rated lamp survival factor at 12,000 h | 0.50 |
| Lifespan B50 | 12000 h |

Additional product data

| | |
|-----------------------------|---------|
| Base (standard designation) | RX7s |
| Design / version | Clear |
| Mercury content | 12.6 mg |

Capabilities

| | |
|-----------------------------|-----|
| Dimmable | No |
| Burning position | p45 |
| Enclosed luminaire required | Yes |
| Hot restart | Yes |

Certificates & standards

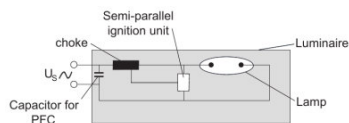
| | |
|-------------------------|--------------|
| Energy efficiency class | A |
| Energy consumption | 86 kWh/1000h |

Country-specific categorizations

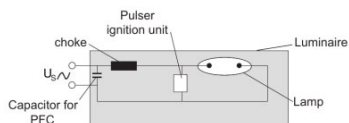
| | |
|-------|-----------------------------------|
| ILCOS | MD/UB-70/730-H/E/SL-RX7s-19/117/H |
|-------|-----------------------------------|

SYSTEM GUARANTEE

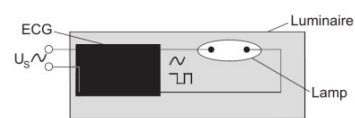
When operated with OSRAM POWERTRONIC control gear, an extended system guarantee is granted for these lamps



Circuit diagram



Circuit diagram



Circuit diagram

LOGISTICAL DATA

| Product code | Product description | Packaging unit (Pieces/Unit) | Dimensions (length x width x height) | Volume | Gross weight |
|---------------|---------------------|------------------------------|--------------------------------------|----------------------|--------------|
| 4008321678300 | HQI-TS 70 W/WDL | Shipping carton box 12 | 149 mm x 136 mm x 118 mm | 2.39 dm ³ | 386.00 g |

The mentioned product code describes the smallest quantity unit which can be ordered. One shipping unit can contain one or more single products. When placing an order, for the quantity please enter single or multiples of a shipping unit.

REFERENCES / LINKS

For more information on the system guarantee and the terms and conditions of the guarantee visit

- ▶ www.ledvance.com/system-guarantee

DISCLAIMER

Subject to change without notice. Errors and omission excepted. Always make sure to use the most recent release.