

PRODUCT DATASHEET

HCI-E/P 50 W/830 WDL PB coated

POWERBALL HCI-E/P | Metal halide lamps for open and enclosed luminaires



AREAS OF APPLICATION

- Shop interiors, shop windows
- Shopping arcades
- Foyers, reception areas
- Museums, exhibitions
- Exhibition halls and trade fairs
- Streets
- Pedestrian zones, public squares
- Parks and gardens
- Suitable for use in open and enclosed luminaires
- Outdoor applications only in suitable luminaires

PRODUCT BENEFITS

- Very high efficiency
- Simple lamp installation/replacement in open luminaires
- Good color rendering
- Very good color stability
- UV values significantly below the maximum permitted thresholds to IEC 61167 thanks to UV filter

PRODUCT FEATURES

- POWERBALL ceramic technology
- Light color: warm white (830 WDL)



TECHNICAL DATA

Electrical data

| | |
|-------------------------------|-----------------------------|
| Nominal wattage | 50.00 W |
| Rated wattage | 53.00 W |
| Lamp current | 0.76 A |
| PFC capacitor at 50 Hz | 10 μ F ¹⁾ |
| Ignition voltage | 3.6 / 5.0 kVp ²⁾ |

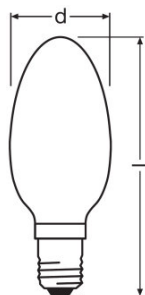
¹⁾ At rated voltage and $\cos \varphi \geq 0.9$

²⁾ Minimum; for superimposed ignition with square wave electronic ballast 3.0 kVp are sufficient / Maximum; this limit is for safety reasons

Photometrical data

| | |
|---|---------|
| Rated lamp efficacy (standard condition) | 75 lm/W |
| Rated luminous flux | 4000 lm |
| Color rendering index Ra | 85 |
| Color temperature | 3000 K |
| Light color | 830 |
| Rated LLMF at 2,000 h | 0.74 |
| Rated LLMF at 4,000 h | 0.68 |
| Rated LLMF at 6,000 h | 0.64 |
| Rated LLMF at 8,000 h | 0.61 |
| Rated LLMF at 12,000 h | 0.57 |
| UV protection | Yes |

Dimensions & weight



| | |
|-----------------------|----------|
| Diameter | 54.0 mm |
| Length | 138.0 mm |
| Product weight | 76.00 g |

Temperatures & operating conditions

| | |
|---|--------|
| Maximum permitted outer bulb temperature | 330 °C |
|---|--------|

| | |
|--|--------|
| Maximum permitted base edge temperature | 190 °C |
|--|--------|

Lifespan

| | |
|---|---------|
| Rated lamp survival factor at 2,000 h | 0.99 |
| Rated lamp survival factor at 4,000 h | 0.97 |
| Rated lamp survival factor at 6,000 h | 0.90 |
| Rated lamp survival factor at 8,000 h | 0.80 |
| Rated lamp survival factor at 12,000 h | 0.50 |
| Lifespan B50 | 12000 h |
| Operation mode LLMF/LSF | 50 Hz |

Additional product data

| | |
|------------------------------------|---------|
| Base (standard designation) | E27 |
| Design / version | Coated |
| System guarantee level | 3 (1/5) |
| Mercury content | 6.7 mg |

Capabilities

| | |
|------------------------------------|-------------------|
| Dimmable | Yes ¹⁾ |
| Burning position | Any |
| Enclosed luminaire required | No |

¹⁾ In combination with POWERTRONIC PTo

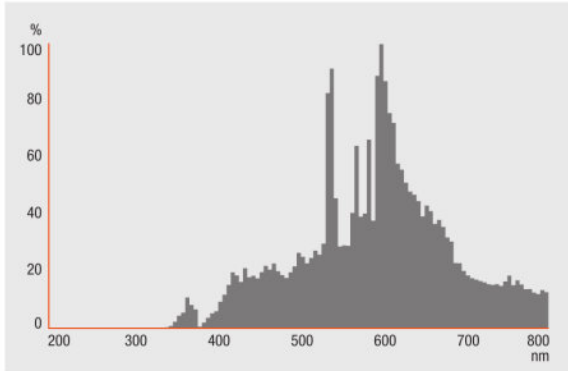
Certificates & standards

| | |
|--------------------------------|--------------|
| Energy efficiency class | A |
| Energy consumption | 59 kWh/1000h |

Country-specific categorizations

| | |
|--------------|-------------------------------|
| ILCOS | MES/UB-50/830-H/SL-E27-57/144 |
|--------------|-------------------------------|

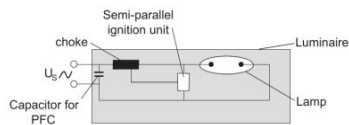
Light Distribution



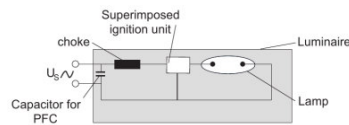
Spectral power distribution

SYSTEM GUARANTEE

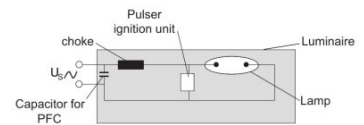
When operated with OSRAM POWERTRONIC control gear, an extended system guarantee is granted for these lamps



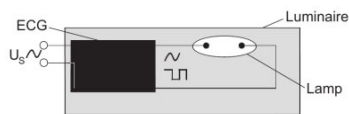
Circuit diagram



Circuit diagram



Circuit diagram



Circuit diagram

LOGISTICAL DATA

| Product code | Product description | Packaging unit (Pieces/Unit) | Dimensions (length x width x height) | Volume | Gross weight |
|---------------|-----------------------------------|------------------------------|--------------------------------------|-----------------------|--------------|
| 4008321338488 | HCI-E/P 50 W/830 WDL PB coated | Shipping carton box 12 | 310 mm x 210 mm x 240 mm | 15.62 dm ³ | 1469.00 g |

The mentioned product code describes the smallest quantity unit which can be ordered. One shipping unit can contain one or more single products. When placing an order, for the quantity please enter single or multiples of a shipping unit.

REFERENCES / LINKS

For more information on the system guarantee and the terms and conditions of the guarantee visit

- ▶ www.ledvance.com/system-guarantee

DISCLAIMER

Subject to change without notice. Errors and omission excepted. Always make sure to use the most recent release.