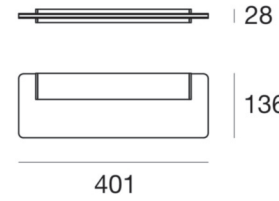
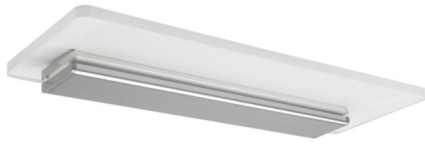




Wall Lights | 220-240 V | topLED 14 W 350 mA | CRI 80
7909



Technical data	
Type	Surface
Installation position	Wall lights
Installation environment	Indoor
Light Source	LED
Optics	General Lighting
Light emission direction	downward
Power	14 W
Luminous flux (source)	1449 lm
Frequency	50 - 60 Hz
CCT / Tone	3000 K
Colour rendering index	80 Ra
AC / DC	AC
Safety class	1
IP	IP44
Glow wire test	650°
Direct mounting on normally flammable surfaces	Yes
CE	Yes
ETL	No
Fire Rated (BS 476 PT21 compliant)	No
Driver included	Driver
Induction	No
Emergency mode	No
Motion sensor	No
Directional	No
Tilting	No
Walk-over	No
Drive-over	No
Cable included	No
Resin potting	No
Type of light emission	Double emission
Net weight	0.950 Kg

Finishing casing	
Material	Aluminium
Colour	Anodised Aluminum
Processing	Anodisation

Finishing diffuser	
Material	PMMA
Colour	white
Processing	Silk-screening

Wall Lights | 220-240 V | topLED 14 W 350 mA | CRI 80
7909

Double emission wall lights for indoor application. The warm white LED light source with a general lighting light distribution is composed of 36 topLED LEDs with CCT of 3000 K and a CRI 80; the source luminous flux is 1449 lm, with a 103.5 lm/W nominal luminous efficacy.

The device body is made of aluminium and features a anodised aluminum finish, processed by means of anodisation; the diffuser is made of pmma with a silk-screening treatment; the mounting frame is made of iron, with a white finish, processed by means of coating. The ingress protection degree is IP44; the total weight is of 0.950 kg.

The total absorbed power is 14 W.

The device features protection class I and can be wall lights-mounted.

Illuminotechnical Features	
Light Output Ratio (LOR)	65 %
Luminous flux (source)	1449 lm
Luminaire luminous flux	956 lm
Consumption	14 W
Luminaire efficacy	69 lm/W
Colour temperature	3000 K
Standard Deviation of Colour Matching	3 Step MacAdam
Colour rendering index	80 Ra
Life / Failure Ratio	
L80 B20 C0 80000h	

