

# PRODUCT DATASHEET

## HQI-BT 400 W/D PRO

POWERSTAR HQI-T | Metal halide lamps with quartz technology for enclosed luminaires



---

### AREAS OF APPLICATION

- Factories and workshops
- Sports halls and multi-purpose halls
- Industrial installations
- Docks and port facilities
- Marshaling yards, container transshipment facilities
- Buildings, monuments, bridges
- Approved only for use in enclosed luminaires
- Outdoor applications only in suitable luminaires

---

### PRODUCT BENEFITS

- Output of up to 400 W
- High efficiency
- Long lifetime
- E40 screw base for simple lamp handling
- UV values significantly below the maximum permitted thresholds to IEC 61167 thanks to UV filter

---

### PRODUCT FEATURES

- POWERSTAR quartz technology
- Light colors: neutral white (N), daylight (D)



**TECHNICAL DATA**

Electrical data

<b>Nominal wattage</b>	400.00 W
<b>Rated wattage</b>	420.00 W
<b>Lamp current</b>	4.0 A
<b>PFC capacitor at 50 Hz</b>	45 µF <sup>1)</sup>
<b>Nominal voltage</b>	115 V
<b>Ignition voltage</b>	4.0 / 5.0 kVp <sup>2)</sup>

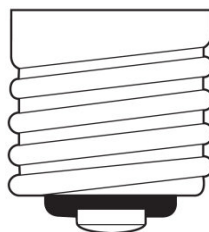
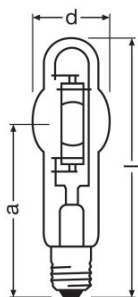
<sup>1)</sup> At rated voltage and  $\cos \varphi \geq 0.9$

<sup>2)</sup> Minimum / Maximum

Photometrical data

<b>Rated lamp efficacy (standard condition)</b>	81 lm/W
<b>Rated luminous flux</b>	34000 lm
<b>Color rendering index Ra</b>	92
<b>Color temperature</b>	5500 K
<b>Light color</b>	955
<b>Rated LLMF at 2,000 h</b>	0.92
<b>Rated LLMF at 4,000 h</b>	0.90
<b>Rated LLMF at 6,000 h</b>	0.87
<b>Rated LLMF at 8,000 h</b>	0.85
<b>Rated LLMF at 12,000 h</b>	0.81
<b>UV protection</b>	Yes

Dimensions & weight



E40  
IEC 7004-24  
DIN 49625

<b>Diameter</b>	62.0 mm
<b>Length</b>	285.0 mm
<b>Light center length (LCL)</b>	175.0 mm
<b>Product weight</b>	200.00 g

## Temperatures &amp; operating conditions

Maximum permitted outer bulb temperature	500 °C
Maximum permitted base edge temperature	250 °C

## Lifespan

Rated lamp survival factor at 2,000 h	0.96
Rated lamp survival factor at 4,000 h	0.94
Rated lamp survival factor at 6,000 h	0.93
Rated lamp survival factor at 8,000 h	0.88
Rated lamp survival factor at 12,000 h	0.81
Lifespan B50	16000 h

## Additional product data

Base (standard designation)	E40
Product remark	With NAV control gear
Design / version	Clear
Mercury content	59.0 mg

## Capabilities

Dimmable	No
Burning position	Any
Enclosed luminaire required	Yes

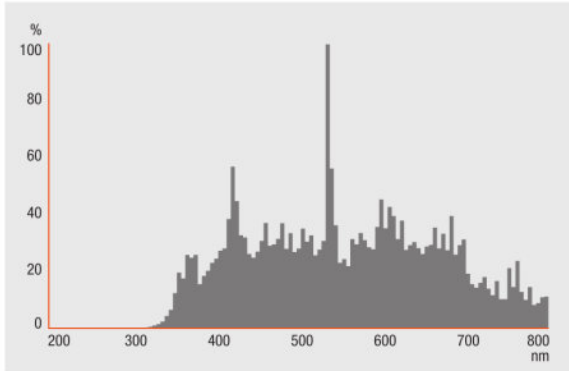
## Certificates &amp; standards

Energy efficiency class	A
Energy consumption	462 kWh/1000h

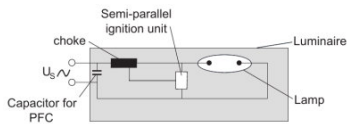
## Country-specific categorizations

ILCOS	MT/UB-400/960-H/E/SL-E40-62/285
-------	---------------------------------

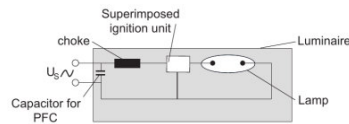
Light Distribution



Spectral power distribution



Circuit diagram



Circuit diagram

LOGISTICAL DATA

Product code	Product description	Packaging unit (Pieces/Unit)	Dimensions (length x width x height)	Volume	Gross weight
4008321677860	HQI-BT 400 W/D PRO	Shipping carton box 12	342 mm x 347 mm x 258 mm	30.62 dm <sup>3</sup>	3534.00 g

The mentioned product code describes the smallest quantity unit which can be ordered. One shipping unit can contain one or more single products. When placing an order, for the quantity please enter single or multiples of a shipping unit.

DISCLAIMER

Subject to change without notice. Errors and omission excepted. Always make sure to use the most recent release.