

# PRODUCT DATASHEET

## FC 40 W/830

LUMILUX T5 FC | Circular fluorescent lamps 16 mm, with 2GX13 base



---

### AREAS OF APPLICATION

- Public buildings
- Offices
- Restaurants
- Industry
- Shops
- Supermarkets and department stores
- Hotels

---

### PRODUCT BENEFITS

- Extremely economical
- Good quality of light
- Excellent luminous flux
- Excellent uniform illumination with no shadows
- Good average life (with OSRAM ECG)

---

### PRODUCT FEATURES

- Good color rendering group: 1B ( $R_a$ : 80...89)
- Dimmable (from 100...1 % with QTi DALI/DIM ECG)
- Single-ended round fluorescent lamp
- Tube diameter: 16.0 mm



**TECHNICAL DATA**

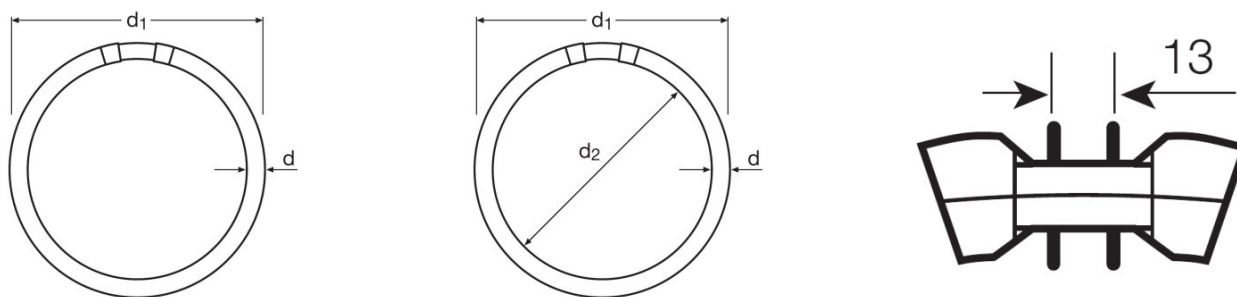
Electrical data

Nominal wattage	40.00 W
Rated wattage	39.90 W

Photometrical data

Rated lamp efficacy (standard condition)	85 lm/W
Color rendering index Ra	≥80
Rated luminous flux	3400 lm
Luminous flux at 25 °C	3400 lm
Light color	830
Rated color temperature	3000 K
Nominal luminous flux	3400 lm
Light color (designation)	LUMILUX Warm White
Rated LLMF at 2,000 h	0.85
Rated LLMF at 4,000 h	0.83
Rated LLMF at 6,000 h	0.80
Rated LLMF at 8,000 h	0.80
Rated LLMF at 12,000 h	0.75

Dimensions & weight



Tube diameter	16 mm
Length	305.0 mm
Length with base excl. base pins/connection	300.00 mm
Diameter	16.0 mm
Maximum diameter	16.0 mm

Temperatures & operating conditions

Rated ambient temp.w.max.luminous flux	35.0 °C
--	---------

## Lifespan

<b>Service life</b>	8000 h <sup>1)</sup>
<b>Lifespan</b>	12000 h <sup>1)</sup>
<b>Rated lamp survival factor at 2,000 h</b>	0.99
<b>Rated lamp survival factor at 4,000 h</b>	0.99
<b>Rated lamp survival factor at 6,000 h</b>	0.98
<b>Rated lamp survival factor at 8,000 h</b>	0.92
<b>Rated lamp survival factor at 12,000 h</b>	0.50
<b>Operation mode LLMF/LSF</b>	HF
<b>Rated lamp life time</b>	12000 h
<b>Nominal lamp life time</b>	12000 h

<sup>1)</sup> With preheat ECG

## Additional product data

<b>Base (standard designation)</b>	2GX13
<b>Mercury content</b>	3.8 mg
<b>Show WEEE picto</b>	Yes
<b>Product remark</b>	Suitable for ECG operation only

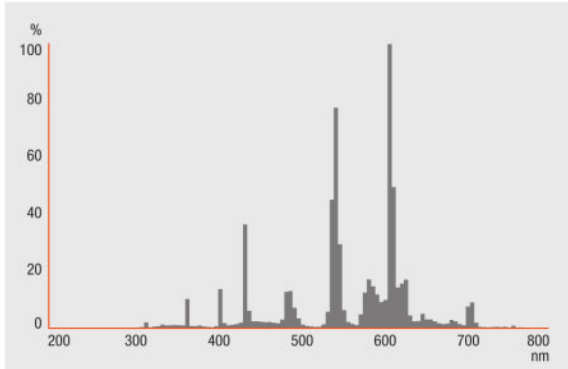
## Capabilities

<b>Suitable for indoor</b>	Yes
----------------------------	-----

## Certificates &amp; standards

<b>Energy efficiency class</b>	A+
<b>Energy consumption</b>	44 kWh/1000h

## Light Distribution




---

Spectral power distribution

---

### SYSTEM GUARANTEE

OSRAM System+ Guarantee in combination with OSRAM ECGs

---

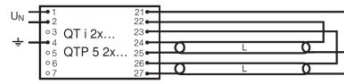
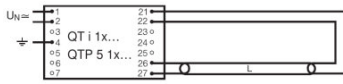
### EQUIPMENT / ACCESSORIES

– Exclusively for operation on electronic control gears

---

### SAFETY ADVICE

In case of lamp breakage: [www.ledvance.com/brokenlamp](http://www.ledvance.com/brokenlamp)



Circuit diagram

Circuit diagram

**LOGISTICAL DATA**

Product code	Product description	Packaging unit (Pieces/Unit)	Dimensions (length x width x height)	Volume	Gross weight
4050300528540	FC 40 W/830	Shipping carton box 12	375 mm x 320 mm x 328 mm	39.36 dm <sup>3</sup>	2787.00 g

The mentioned product code describes the smallest quantity unit which can be ordered. One shipping unit can contain one or more single products. When placing an order, for the quantity please enter single or multiples of a shipping unit.

**REFERENCES / LINKS**

For more information on the system guarantee and the terms and conditions of the guarantee visit

- ▶ [www.ledvance.com/system-guarantee](http://www.ledvance.com/system-guarantee)

**DISCLAIMER**

Subject to change without notice. Errors and omission excepted. Always make sure to use the most recent release.

## LUMILUX T5 FC | Circular fluorescent lamps 16 mm, with 2GX13 base

Product name	Product name ECG	EAN	Nominal current	Nominal wattage + Power loss	Luminous flux at 35 °C	Number of lighting outlets
FC 40 W/830	QTi 1x14/24/21/39 GII	4008321383334	0.19 A	43.00 W	3200 lm	1
	QTi 1x21/39 DIM	4050300870564	0.18 A	42.00 W	3100 lm	1
	QTi 2x14/24/21/39 GII	4008321383396	0.36 A	88.00 W	3200 lm	2
	QTi 2x21/39 DIM	4050300870694	0.36 A	82.00 W	3100 lm	2
	QTi DALI 1x21/39 DIM	4050300870366	0.18 A	42.00 W	3100 lm	1
	QTi DALI 2x21/39 DIM	4050300870489	0.36 A	82.00 W	3100 lm	2
	QTi DALI-T/E 1x18-57 DIM	4008321060808	0.20 A	45.00 W	3200 lm	1
	QTi DALI-T/E 2x18-42 DIM	4008321060822	0.38 A	87.00 W	3200 lm	2
	QTi-T/E 1x18-57 DIM	4008321060860	0.20 A	45.00 W	3200 lm	1
	QTi-T/E 2x18-42 DIM	4008321060846	0.38 A	87.00 W	3200 lm	2
	QT-M 2x26-42/220-240 S	4008321110022	0.36 A	88.00 W	3200 lm	2
	QTP-M 1x26-42	4008321329134	0.19 A	43.00 W	3200 lm	1